



BARCODE READERS

FIXED-MOUNT ■ HANDHELD ■ MOBILE ■ VERIFIERS

COGNEX

THE GLOBAL LEADER

IN MACHINE VISION AND INDUSTRIAL BARCODE READING

Cognex® the leading supplier of machine vision and industrial barcode reading solutions.

With over 2 million systems installed in facilities around the world and over thirty nine years of experience, Cognex is focused on industrial machine vision and image-based barcode reading technology. Deployed by the world's top manufacturers, suppliers and machine builders, Cognex products ensure that manufactured items meet the stringent quality requirements of each industry.

Cognex solutions help customers improve manufacturing quality and performance by eliminating defects, verifying assembly and tracking information at every stage of the production process. Smarter automation using Cognex vision and barcode reading systems means fewer production errors, which equates to lower manufacturing costs and higher customer satisfaction. With the widest range of solutions and largest network of global vision experts, Cognex is the best choice to help you **Build Your Vision.™**

**\$726
MILLION**
2019 REVENUE

OVER 39
YEARS IN THE BUSINESS

500+
CHANNEL PARTNERS

GLOBAL OFFICES IN
20+ COUNTRIES

2,000,000+
SYSTEMS SHIPPED





COGNEX BARCODE READERS ANY CODE, **EVERY TIME**

Nearly every product uses a 1D or 2D barcode to automate and simplify identification and data capture. The basic process in reading codes is to 1) illuminate the code, 2) locate the code, and 3) extract the data. Organizations must be able to read codes quickly and accurately for maximum efficiency and throughput.

Cognex image-based barcode readers decode 1D and 2D codes, from printed labels to the hardest to read direct part mark (DPM) codes, and deliver industry-leading read rates. Advanced technology, modular options, and easy setup helps reduce costs, optimize performance, increase throughput, and control traceability.

INDUSTRIES

Cognex supplies solutions to virtually all manufacturing and logistics industry sectors, including:

- Aerospace
- Airport Baggage Handling
- Automotive
- Ecommerce Fulfillment
- Electronics
- Field Service
- Food and Beverage
- Medical Devices
- Pharmaceutical
- Retail Distribution

Fixed-Mount Barcode Readers



Handheld Barcode Readers



Mobile Solutions



Barcode Verifiers



PATENTED DECODING TECHNOLOGY AND IMAGE FORMATION TOOLS

Cognex products are optimized with patented decoding algorithms and advanced technologies to ensure continuously high read rates for the most difficult and degraded 1D and 2D codes.



1DMax Algorithm with Hotbars Technology

1DMax® with Hotbars® is optimized for omnidirectional 1D barcode reading, decoding up to 10x the speed of a conventional barcode reader, even with increased noise, limited contrast, and damage.



	TYPICAL 1D ALGORITHM	HOTBARS IMAGE ANALYSIS
Noise		
Specular		
Perspective		
Quiet Zone		
Contrast		
Damage		



2DMax Algorithm with PowerGrid

2DMax® with PowerGrid® is a breakthrough 2D decoding algorithm and technology designed to read 2D codes with significant damage to or complete elimination of a code's finder pattern, clocking pattern, or quiet zone.



No finder pattern



No finder or clocking pattern



Quiet zone violation



Stripe



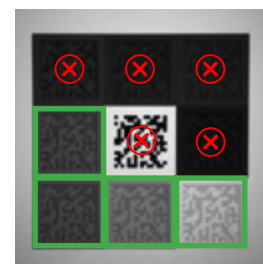
High Dynamic Range (HDR) Technology

HDR imaging uses the latest CMOS image sensor technology, which is 16x more detailed than conventional sensors, to globally enhance image quality and contrast.

Target Source

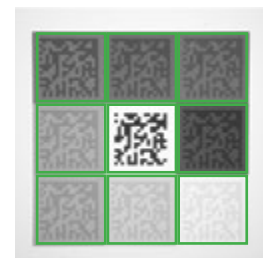
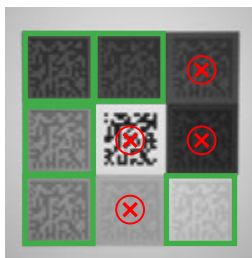


Conventional Sensor



HDR+

HDR+ further increases localized contrast changes automatically. This creates a more uniform image in a single acquisition allowing greater depth-of-field, faster line speeds, and improved handling of difficult codes.

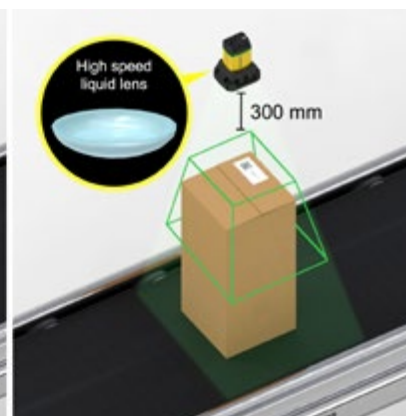
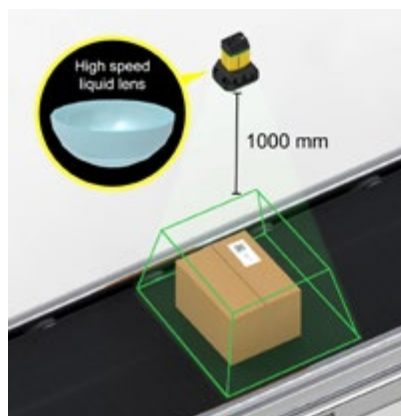


HDR+ technology enables reading an increased range of codes than is possible with conventional or other HDR technologies.



Liquid Lens Technology

This dynamic autofocus technology automatically adapts to changes in working distances for presentation scanning and high-speed, high-variability applications. Available in 8, 10, 16, 24, and 35mm lenses.



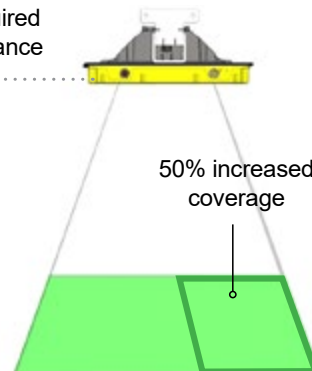
Greater coverage with fewer readers

The Xpand™ technology accessory is available to increase the field-of-view coverage of a single barcode reader by over 50%. This enables wider belt coverage using fewer readers, simplifying setup and installation, and reducing overall cost.

Single Reader



Single Reader + Xpand Accessory



Shorter required working distance

50% increased coverage

MODULAR DESIGN FOR MAXIMUM FLEXIBILITY

Cognex's commitment to continuous innovation ensures modular software and hardware configuration options to solve any barcode reading challenge. The example below represents the modular capabilities of Cognex devices.



Patented technology and advanced algorithms optimize performance.

Straight and right-angle
configuration options



Various lens options for
maximum application coverage



High-powered integrated
and external lighting
options available



Field-interchangeable
lighting options for
optimal illumination on
all surface types

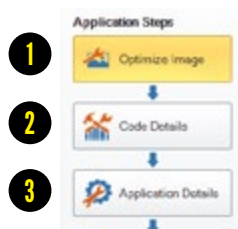
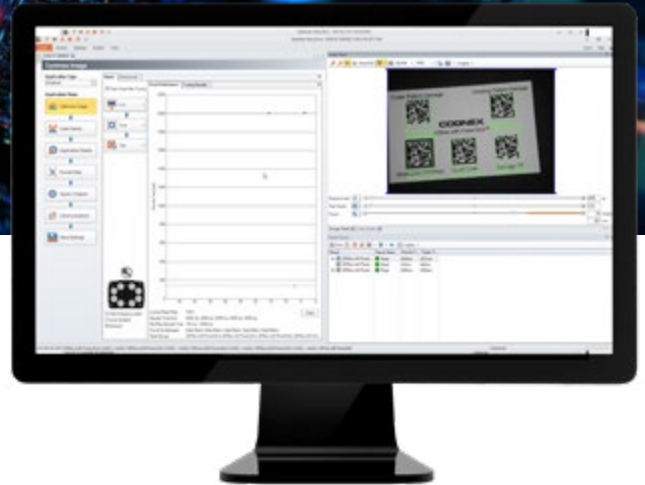


Broad communications and network
connectivity options available

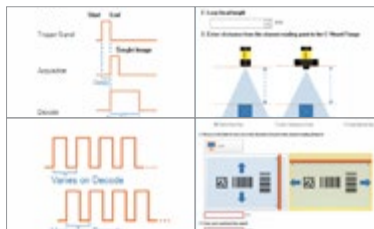
EASY SETUP AND OPERATION

DataMan Setup Tool

The DataMan® Setup Tool software simplifies installation and operation of Cognex barcode readers. It provides step-by-step guidance, auto-adjusts and optimizes variable parameters, and captures code images in real time for user review.



Step-by-step visual guidance



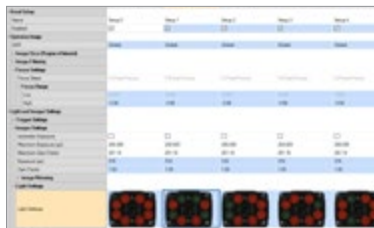
Application assistants
help optimize parameters



Independent lighting controls



**Pre- and post-image
optimization tools**



Multiple read setups
allow for greater product &
environmental variation

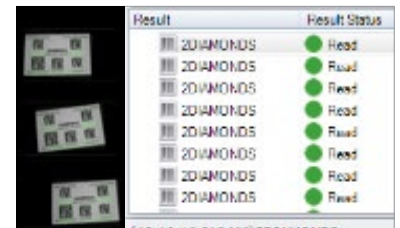


Image & read result history

Performance feedback for process optimization

Cognex technology provides performance feedback for networked DataMan fixed-mount barcode readers, including no-read tracking, read rate trending, and configuration audit trails.



















DATAMAN **FIXED-MOUNT** BARCODE READERS

DataMan fixed-mount, image-based barcode readers offer advanced technology, processing power, modularity, and ease of use for challenging manufacturing and logistics applications.

DataMan 470 Series

Premium reader with multi-core processing power and advanced imaging technology for complex, high-throughput 1D and 2D code applications.

POWER	RESOLUTION	CONNECTIVITY	SYMBOLOLOGIES
 7.5X	 5 MP	 Serial  GigaBit	 1D  2D  Matrix
FEATURES			
 Hotbars	 PowerGrid	 High Speed Liquid Lens	 Cognex  Laser Aimer  SD  Modular  HDR  HDR+



DataMan 370 Series

Delivers superior read performance for the broadest range of applications, including multi-code, multi-symbology applications.



*Including integrated light. Base dimensions are same as DataMan 360 series: 73 mm (L) x 54 mm (W) x 42 mm (H)

POWER



RESOLUTION



CONNECTIVITY



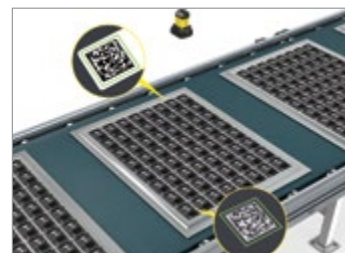
SYMBOLOLOGIES



FEATURES



Fully compatible with DataMan 360 series accessories



DataMan 260 Series

Straight or right-angle modular design ideal for 1D barcodes, higher density 2D codes, or direct part mark (DPM) codes.

POWER



RESOLUTION



CONNECTIVITY



SYMBOLOLOGIES



FEATURES



DataMan 70 Series

Compact design ideal for reading 1D and 2D label-based codes in tight application spaces.

POWER



RESOLUTION



CONNECTIVITY



SYMBOLOLOGIES








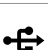









FEATURES



FIXED-MOUNT READER SPECIFICATIONS & FEATURES

	60 Series	70 Series	150 Series	260 Series	360 Series	370 Series	470 Series	503 Series
 Resolution	752 x 480	752 x 480 1280 x 960			800 x 600 1280 x 1024 1600 x 1200	2048 x 1536 2448 x 2048		2048 x 1088
 Processing Power ¹	1X	1.7X	2X		2.5X	5X	7.5X	9X
 FPS	60				Up to 60	Up to 80		150
 Model Variants	L, QL, S, Q, X	L, QL, S, Q	QL, S, Q, X		L, Q, QL, X			QL, X
Lenses								
 Liquid Lens			✓	✓	✓	✓	✓	✓
 High Speed Liquid Lens						✓	✓	
 C-mount		✓	✓	✓	✓	✓	✓	✓
 S-mount	✓	✓	✓	✓	✓			
Symbologies								
 1D	✓	✓	✓	✓	✓	✓	✓	✓
 2D	✓	✓	✓	✓	✓	✓	✓	✓
 Multi-code	✓	✓	✓	✓	✓	✓	✓	✓
Decoding Algorithms								
 1DMax with Hotbars	✓	✓	✓	✓	✓	✓	✓	✓
 2DMax			✓	✓	✓	✓	✓	✓
 PowerGrid			✓	✓	✓	✓	✓	
Technologies								
 Multi-Reader Sync				✓	✓	✓	✓	✓
 HDR						✓	✓	
 HDR+							✓	

	60 Series	70 Series	150 Series	260 Series	360 Series	370 Series	470 Series	503 Series
Lighting Modularity								
 Integrated Lighting	✓	✓	✓	✓	✓	✓	✓	✓
 External Lighting					✓	✓	✓	✓
 High Powered Integrated Torch (HPIT)						✓	✓	
Communications								
 Discrete I/O	✓	✓	✓	✓	✓	✓	✓	✓
 Serial	✓	✓	✓	✓	✓	✓	✓	✓
 Ethernet	✓			✓	✓	✓	✓	✓
 Gigabit Ethernet						✓	✓	
 USB		USB-C	USB					
Additional Features								
 Web HMI Capable						✓	✓	
 Modular	✓	✓	✓	✓	✓	✓	✓	✓
 Device Feedback				✓	✓	✓	✓	✓
 Laser Aimer					✓	✓	✓	✓
 IP Rating	IP40	IP65				IP67		IP65
 ESD-Safe Housing ²		✓	✓	✓	✓	✓	✓	
 SD card					✓	✓	✓	



¹ Processing Power

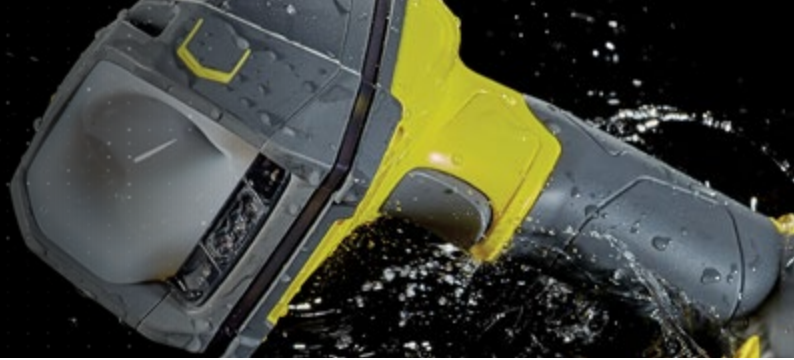
The processing power of a reader is measured by how quickly it decodes a barcode and outputs the resulting data. A comparison test simulating a complex 1D/2D multi-code application (consisting of four varied 1D codes and seven varied 2D codes together) was used to determine the processing power of each DataMan fixed-mount barcode reader.



² ESD-Safe Housing

Protects devices and flammable environments from electrostatic discharge (ESD), the sudden flow of static electricity between two objects.

DATAMAN **HANDHELD** BARCODE READERS



DataMan handheld barcode readers include the latest patented technology, rugged housing, and modular communication options for tough applications.



DataMan 8700 Series

Decodes the toughest direct part mark (DPM) and label-based codes while withstanding harsh industrial environments exposed to oils, dirt, and water.



RESOLUTION



CONNECTIVITY



SYMBOLOLOGIES

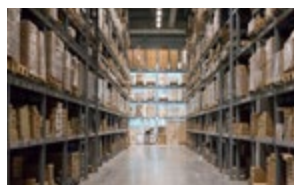


FEATURES



DataMan 8070 Series

Offers advanced image formation for hard to read DPM codes and an extended-range model for label-based logistics applications.



RESOLUTION



CONNECTIVITY



SYMBOLOLOGIES



FEATURES



DataMan 8050 Series

Decodes well-marked DPM and label-based codes in harsh factory floor environments.

CONNECTIVITY













SYMBOLOLOGIES














FEATURES



HANDHELD READER SPECIFICATIONS & FEATURES

	8050 Series	8070 Series	8700 Series
 Resolution	752 x 480	1.2 MP	1.6 MP
 Model Variants	HD, HDX, X	DL, ER	DX
Lenses			
 Liquid Lens		ER	✓
Symbologies			
 1D	✓	✓	✓
 2D	✓	✓	✓
Decoding Algorithms			
 1DMax with Hotbars	✓	✓	✓
 2DMax	✓	✓	✓
 PowerGrid	✓	✓	✓
Technologies			
 HDR			✓
Lighting Modularity			
 Integrated Lighting	Direct lighting	Half-polarized lighting	Diffuse, polarized, and direct lighting

	8050 Series	8070 Series	8700 Series
Communications			
 Ethernet with Industrial Protocols	✓	✓	✓
 Serial	✓	✓	✓
 USB	✓	✓	✓
 Bluetooth	✓	✓	✓
 Wi-Fi	✓		✓
Additional Features			
 OLED Display Screen			✓
 Laser Aimer		✓	
 Modular	✓	✓	✓
 ESD-Safe Housing¹	✓		
 Drop Test	50 drops from 2 meters		Multiple drops from 2.5 meters
 IP Rating	IP65		IP67



¹ ESD-Safe Housing

Protects devices and flammable environments from electrostatic discharge (ESD), the sudden flow of static electricity between two objects. Select models only.



MOBILE SOLUTIONS

Cognex offers the only end-to-end family of mobile scanning solutions, achieving best-in-class 1D, 2D, and direct part mark (DPM) barcode reading performance.

MX-1502 and MX-1000 Series

Combines fast, image-based 1D and 2D barcode reading with iOS® and Android® mobile devices for standard, long, and extended range applications.

RESOLUTION



SYMBOLOLOGIES



FEATURES



MX-100 Series

Mobile device accessory attaches to an Otterbox® uniVERSE Case System® and transforms smartphones into better barcode readers with innovative aiming and lighting.

SYMBOLOLOGIES



FEATURES



Cognex Mobile Barcode Software Development Kit (SDK)

The Cognex Mobile Barcode SDK is a comprehensive software tool for all facets of mobile barcode scanning. It enables tailoring and maintaining a single application for all mobile devices across an entire organization.

The SDK can be used with any supported device, including:

- MX-1000 and MX-1502 Series mobile terminals
- MX-100 Series mobile barcode readers
- Smartphone and tablet cameras (license required)



MOBILE SOLUTIONS SPECIFICATIONS & FEATURES

	MX-100	MX-1000	MX-1502
Resolution	Device dependant	752 x 480	1.2 MP
Scan Range	SR	SR	MR, LR, ER, XR, UV
Lenses			
Liquid Lens			✓
Symbologies			
1D	✓	✓	✓
2D	✓	✓	✓
DPM		✓	✓
Decoding Algorithms			
1DMax with Hotbars		✓	✓
2DMax		✓	✓
PowerGrid			✓

	MX-100	MX-1000	MX-1502
Lighting			
Integrated Lighting	✓	✓	✓
Modular Lighting			✓
Operating System			
iOS	✓	✓	✓
Android		✓	✓
Additional Features			
Modular	✓	✓	✓
Pistol Grip		✓	✓
Drop Test	OtterBox Certified	50 drops from 2 meters	
IP Rating	IP54	IP65	IP65



The modular design of Cognex mobile products supports a number of existing and future iOS and Android devices, leveraging the latest communication technologies including 3G, 4G, 4G LTE, Wi-Fi, Bluetooth, and more.




DATAMAN BARCODE VERIFIERS

Barcode verification is the process of grading the quality of barcodes to globally accepted standards. Cognex barcode verification technology ensures the readability and compliance of codes and provides detailed summary reports.

DataMan 475V Series Inline Verifier

Grades 1D and 2D codes from a fixed position on the production line.

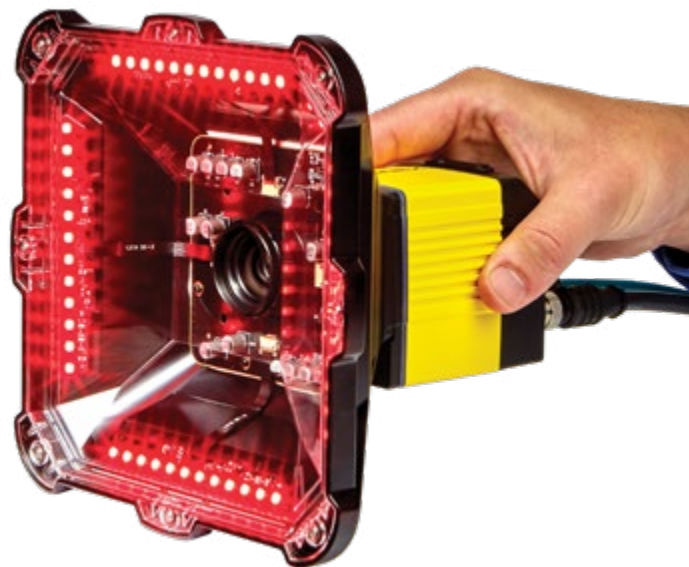
FIELD OF VIEW

 80 x 60 mm

SYBLOGIES




LIGHTING



DataMan 8072V Series Handheld Verifier

Grades the most difficult direct part mark (DPM) codes with 30/45/90-degree angle lighting options.

FIELD OF VIEW

 27 x 20 mm,
17 x 13 mm

SYBLOGIES

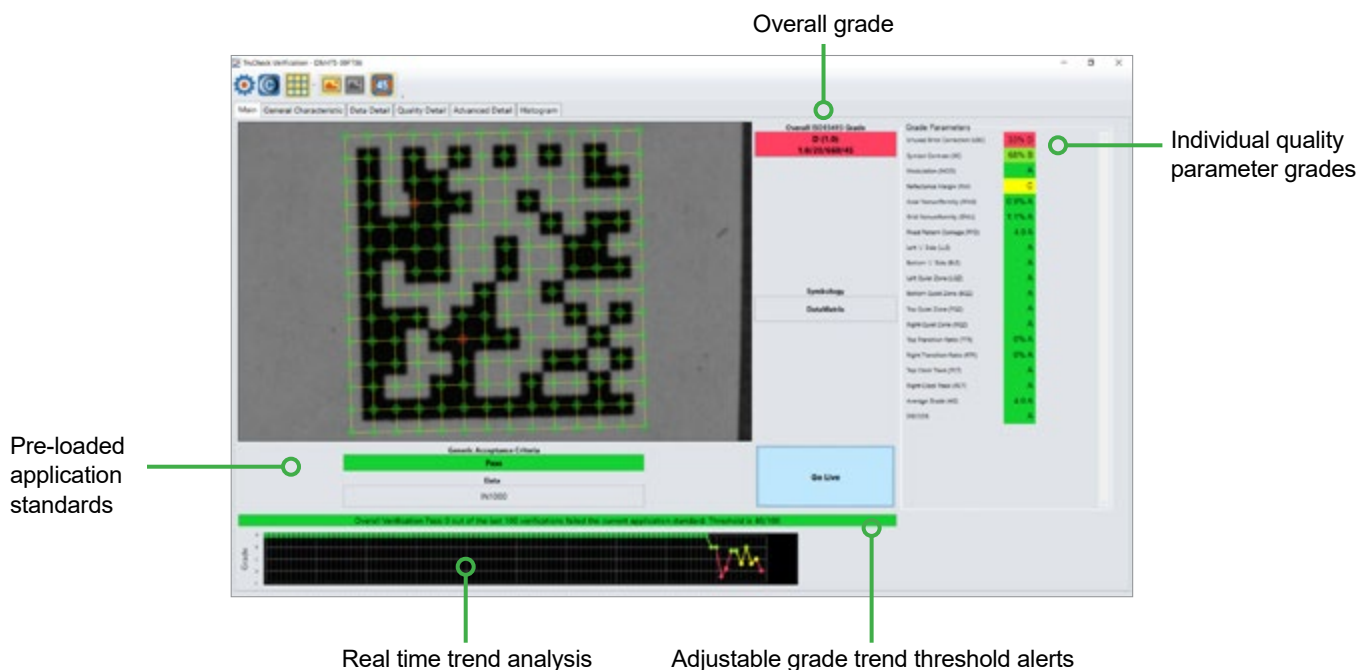


LIGHTING



Auto-generate code quality data and reports

Barcode verification software provides visual diagnostic information to identify one-off or trending code quality issues. Export the data or transfer raw data to your own database for further analysis.



BARCODE VERIFIER SPECIFICATIONS & FEATURES

	8072V	475V
Resolution	1.2 MP	5 MP
Field of View	27 x 20 mm, 17 x 13 mm	80 x 60 mm
Minimum X-Dimension	6.0, 3.5 mil	6.0 mil
Model Variants	HD	
Symbologies		
1D		✓
2D	✓	✓
DPM	✓	✓

	8072V	475V
Lighting Modularity		
30-degree	✓	
45-degree	✓	✓
90-degree	✓	
Additional Features		
IP Rating	IP65	
Industry Standards Compliance	ISO/IEC 15415, ISO/IEC TR (AIM DPM)	ISO/IEC 15415, ISO/IEC 15416, ISO/IEC TR (AIM DPM)
Applications Standards	GS1, MIL-STD 130 IUD, UDI, HIBCC, ISO 15434	GS1, MIL-STD 130 IUD, UDI, HIBCC, ISO 15434, Russian Crypto-Code, Custom Application Standards

MODELS AND SYMBOLOGIES

Regardless of code symbology, size, quality, printing method, or surface, Cognex has a barcode reader that can read the code, ensuring maximum efficiency and traceability.

Model	Reads
L	1D fixed position barcodes
QL	1D omnidirectional barcodes
S	Slow or indexed well-marked 1D and 2D codes
Q	High-speed 1D and 2D codes
DX/X	Challenging 1D and 2D codes, including DPM codes
UHD	Ultra-small, well-marked 2D DPM codes (0.7 mil)
HD	Small 1D and 2D codes (6-10 mil)
HDX	Smaller 1D and 2D codes (2-5 mil)
DL	Well-marked 1D and 2D DPM codes
SR	Codes from standard range
MR	Codes from mid-range
LR	Dense or small codes from long range (high shelves)
ER	Codes from extended-range (very high shelves)
XR	Codes on hanging signs or ceilings
UV	Ultraviolet (invisible) codes
V	Verifies or grades the quality of codes

1D Codes

UPC/EAN/JAN



Codabar



Code 11



Code 93



Code 128



GS1 DataBar



Code 25



Code 39



Interleaved 2 of 5



MSI Plessey



Pharmacode



2D Codes

Data Matrix



QR



Micro QR



PDF417



MicroPDF



Aztec Code



DotCode



Postal Codes

POSTNET



Intelligent Mail Barcode



PLANET, Australian Post, Japan Post, Royal Mail, UPU



INDUSTRY 4.0

Industry 4.0, or “The Industrial Internet of Things,” refers to a set of emerging innovations in advanced automation, machine vision, Big Data, cloud computing, and machine learning which will revolutionize manufacturing. Industry 4.0 demonstrates tremendous potential to bolster productivity, reduce waste, refine product quality, enhance manufacturing flexibility, and decrease operating costs.

Machine vision and industrial barcode reading will be a critical part of automation systems in Industry 4.0. As data analytics capabilities progress, the high volume of data accessible through vision and barcode reading equipment will be used to identify and flag defective products, understand their deficiencies, and enable fast and effective intervention in the Industry 4.0 factory.

For more information,
visit cognex.com/industry-4-0.



BUILD YOUR VISION

BARCODE READERS

Cognex industrial barcode readers and mobile terminals with patented algorithms provide the highest read rates for 1D, 2D and DPM codes regardless of the barcode symbology, size, quality, printing method or surface.

www.cognex.com/barcodereaders



2D VISION SYSTEMS

Cognex machine vision systems are unmatched in their ability to inspect, identify and guide parts. They are easy to deploy and provide reliable, repeatable performance for the most challenging applications.

www.cognex.com/machine-vision



3D VISION SYSTEMS

Cognex In-Sight laser profilers and 3D vision systems provide ultimate ease of use, power and flexibility to achieve reliable and accurate measurement results for the most challenging 3D applications.

www.cognex.com/3D-vision-systems



VISION SOFTWARE

Cognex vision software provides industry leading vision technologies, from traditional machine vision to deep learning-based image analysis, to meet any development needs.

www.cognex.com/vision-software



COGNEX

Companies around the world rely on Cognex vision and barcode reading to optimize quality, drive down costs and control traceability.

Corporate Headquarters One Vision Drive Natick, MA 01760 USA

Regional Sales Offices

Americas

North America +1 844-999-2469
Brazil +55 11 4210 3919
Mexico +01 800 733 4116

Europe

Austria +49 721 958 8052
Belgium +32 289 370 75
France +33 1 7654 9318
Germany +49 721 958 8052

Hungary +36 800 80291
Ireland +44 121 29 65 163
Italy +39 02 3057 8196
Netherlands +31 207 941 398
Poland +48 717 121 086
Spain +34 93 299 28 14
Sweden +46 21 14 55 88
Switzerland +41 445 788 877
Turkey +90 216 900 1696
United Kingdom +44 121 29 65 163

Asia

China +86 21 6208 1133
India +9120 4014 7840
Japan +81 3 5977 5400
Korea +82 2 539 9980
Malaysia +6019 916 5532
Singapore +65 632 55 700
Taiwan +886 3 578 0060
Thailand +66 88 7978924
Vietnam +84 2444 583358

www.cognex.com

© Copyright 2020, Cognex Corporation. All information in this document is subject to change without notice. All Rights Reserved. Cognex, DataMan, Hotbars, 2DMax, 1DMax, and PowerGrid are registered trademarks of Cognex Corporation. Xpand is a trademark of Cognex Corporation. All other trademarks are property of their respective owners. Lit. No. DMIDPG-EN-05-2020